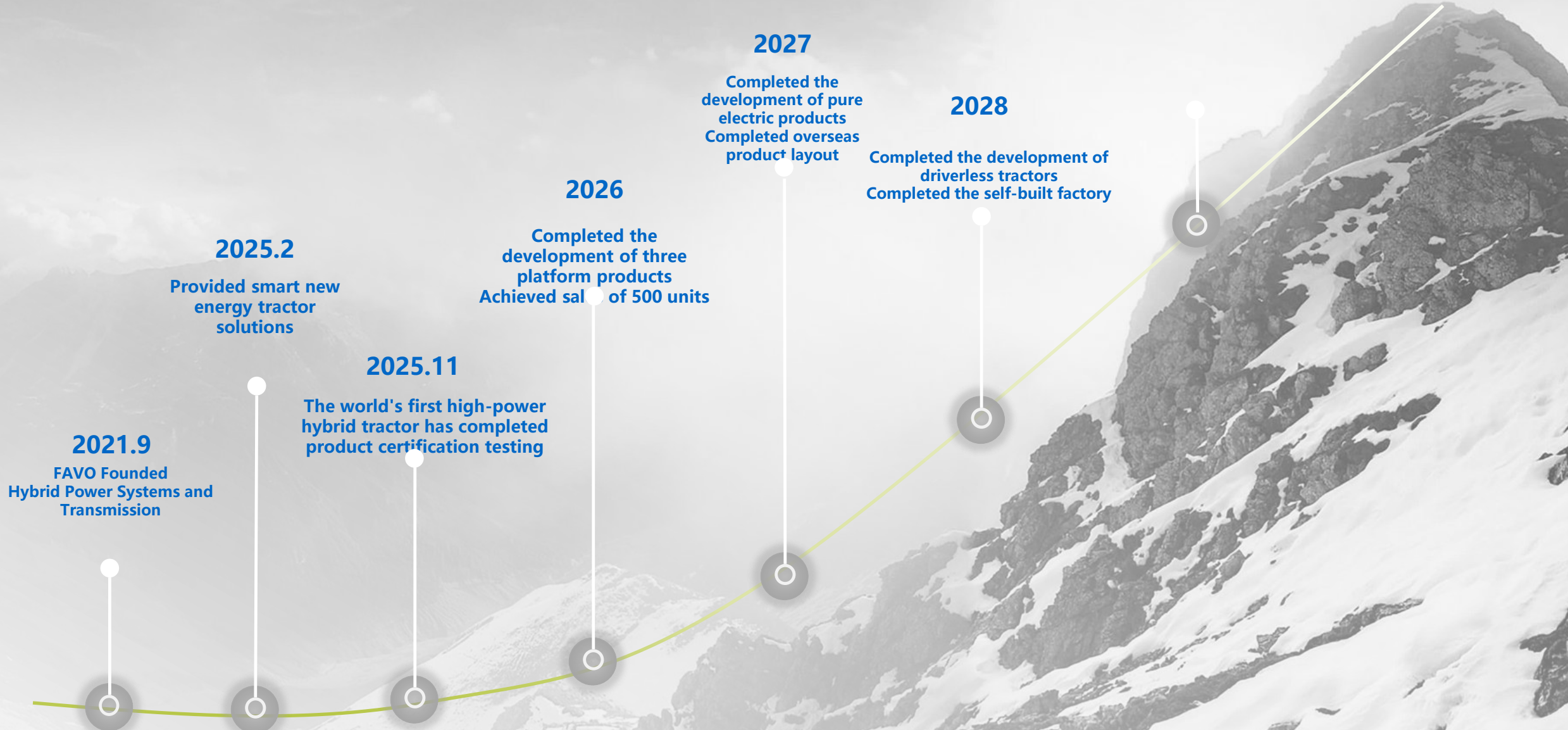




**FAVO (Beijing) Technology Co., Ltd.**  
**Smart New Energy Agricultural Equipment Solutions**

FAVO (Beijing) Technology Co., Ltd. is a company focused on the research and development, manufacturing, sales, and advancement of smart agriculture in the new energy and smart tractor sectors. It is committed to leveraging the advantages of the entire industrial chain of new energy and smart vehicles to develop new energy, smart agricultural machinery, providing smart new energy tractor solutions, and becoming a leading enterprise in the new energy agricultural machinery industry.

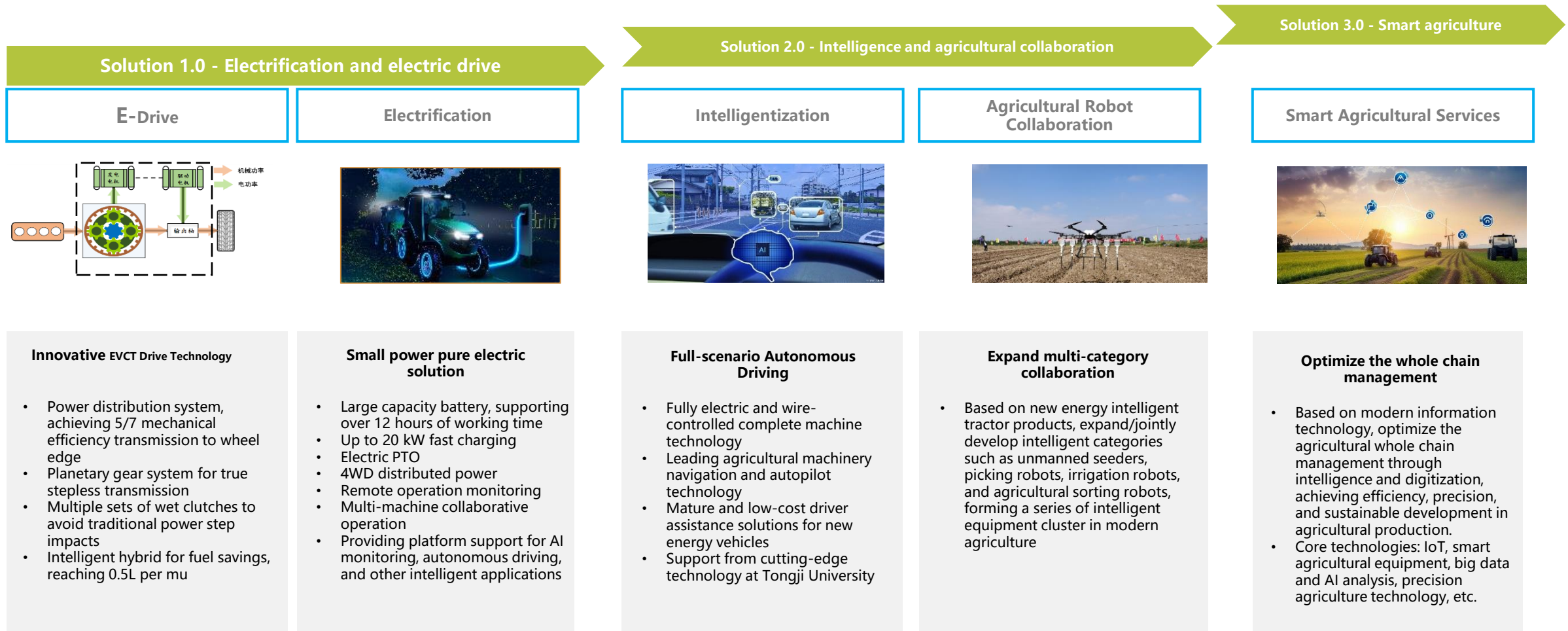
**2030**  
A total of 14,000 tractors sold



# R&D Philosophy: Gradually provide a complete chain solution for smart agriculture



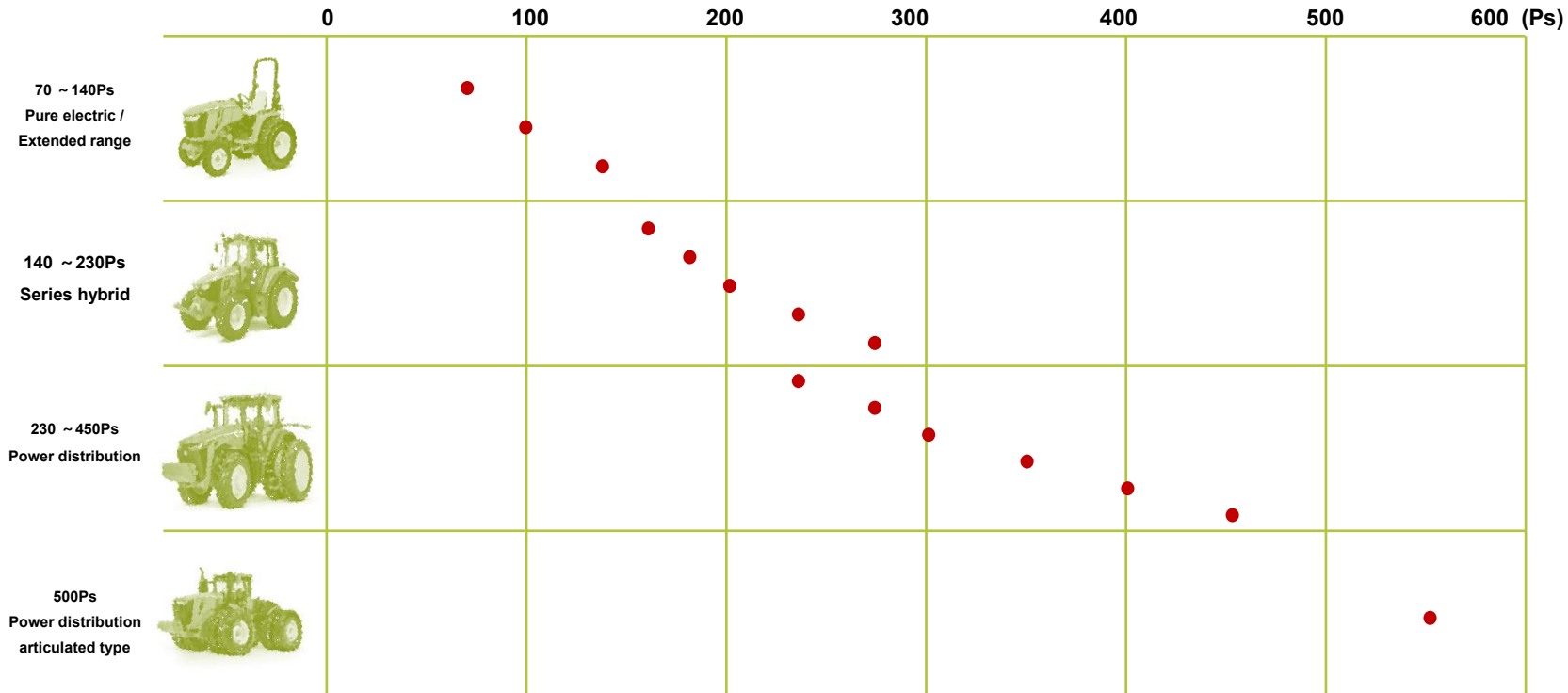
- Based on a comprehensive analysis of industry prospects and development trends, we will give full play to FAVO's technological and market accumulation in the fields of electrification, intelligence, and passenger/commercial vehicles. We will form a complete set of solutions consisting of Stage 1.0: Electric drive and electrification; Stage 2.0: Intelligence and agricultural robot collaboration; Stage 3.0: Agricultural services, to deeply empower the development of smart agriculture.





Product platform

Application scenarios



Domestic and international orchard and facility agriculture scenarios  
Low horsepower flexible and convenient steering operations



Domestic Central Plains region small and medium fields  
Medium horsepower PTO operations



Domestic large field crop scenarios  
High horsepower plowing operations



Overseas market  
Land-based multi-shank plow towing operations

Fully electronic control system



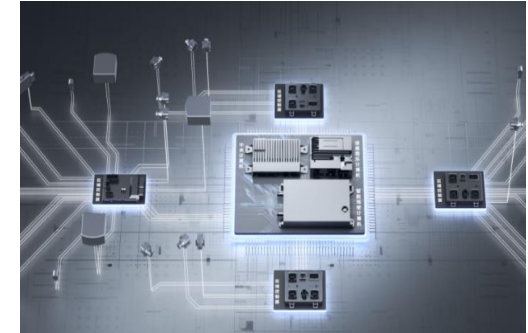
- IDCU Integrated Domain Controller
- Automatic 2WD/4WD Switching
- Automatic High/Low Gear Switching
- Automatic Lift Control
- Automatic Power Switching Between Gasoline and Electric
- 0-40 km Speed Control
- Control Accuracy Up to 0.1 km/h
- Supports Visual Autonomous Driving

Steering Control Technology



- Electronic control systems directly drive actuators (such as steering, braking, throttle, transmission, etc.) without relying on physical connections, enhancing operational efficiency and flexibility, laying the foundation for autonomous driving and intelligent operations.

Passenger Vehicle EE Architecture



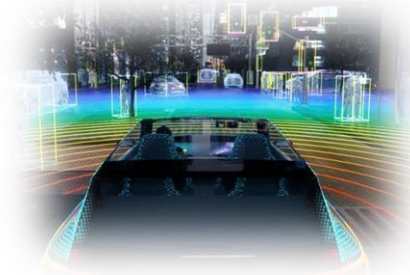
- Characterized by "high integration, high intelligence, and high reliability", equipped with vehicle control units like VCU, easily realizing functions such as electronic throttle and adaptive cruise control, supporting the migration of passenger vehicle architecture and the expansion of fully autonomous driving capabilities.

## Autonomous Driving

By adopting mature autonomous driving solutions and capabilities from the automotive industry, significantly enhancing the intelligence level of tractors



Automotive Vision Solutions



Automotive Perception Components

Intelligent Tractor



## Joint Intelligence



Drones for Irrigation



Drones for Seeding



Smart Tractors

jointly build

Intelligent Agricultural Production



# First Platform: Full-frame High-power Hybrid Tractor

FAVO

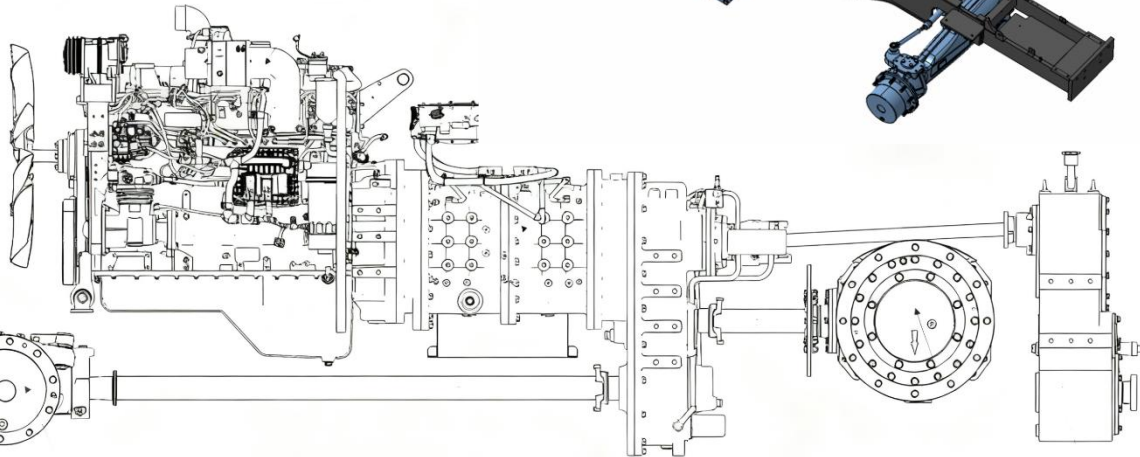
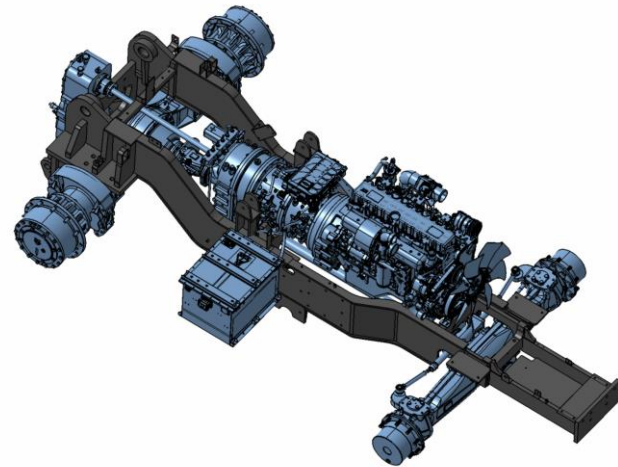


Product platform	F Series
Power Range (Ps)	260 ~ 450
Dimensions (Length × Width × Height, mm)	6090×2870×3290mm
Wheelbase (mm)	3130
Minimum Turning Radius (m)	< 6
Front Wheel Track (mm)	2160
Rear Wheel Track (mm)	2240
Rated Traction (kN)	58
Maximum Traction (kN)	72
Maximum Lifting Force (kN)	65
Minimum Operating Weight (kg)	10200
Fuel Tank Capacity (L)	≥700
Drive Type	4×4
Minimum Ground Clearance (mm)	460
Forward Gear Speed (km/h)	0-40
Reverse Gear Speed (km/h)	0-25
PTO Output	Rear, Independent Drive
Rated Engine Speed (r/min)	540/1000
Tire Model	Front 540/65R30 Rear 650/65R42

# Product Advantages: Optimized Architecture

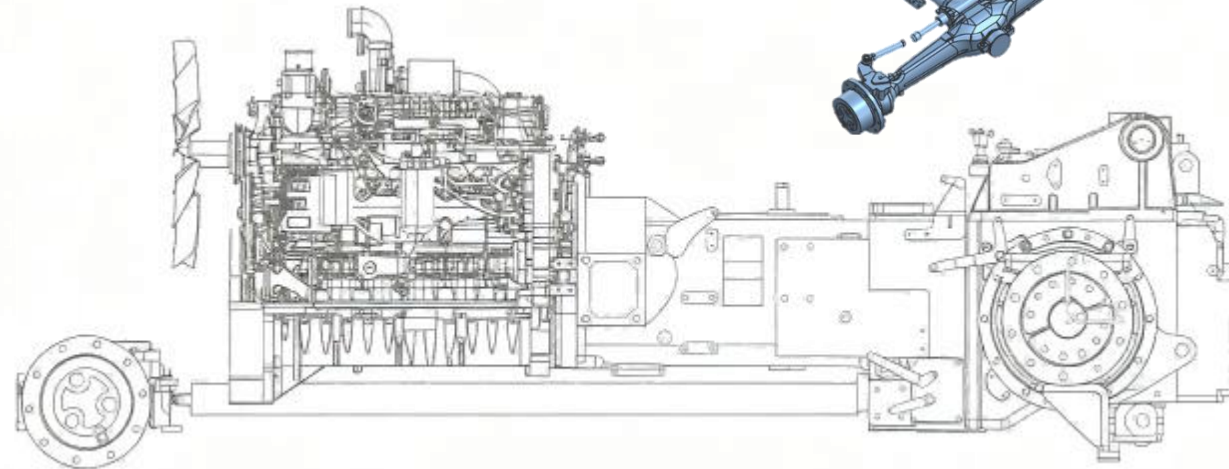
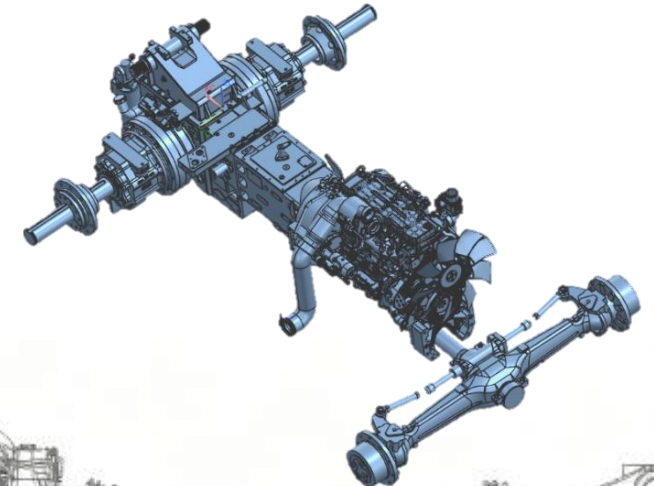
## Full frame power distribution hybrid

- Hybrid continuously variable transmission, reducing workload and saving fuel
- Full frame structure, "never breaks"; three-level shock absorption, enhancing NVH performance
- Construction machinery axle, improving load-bearing capacity and reducing costs
- Modular design, enhancing maintenance convenience, high degree of product platformization



## Traditional "Iron Cross" bridge transmission

- Complex mechanical control structure, low reliability
- Power system housing bears traction force, low reliability, power system without shock absorption
- Different power segments use different chassis, high development and manufacturing costs
- Integral structure, difficult maintenance, high costs



# Product Advantages: Power Distribution

Functional Comparison	Power Distribution	Series Hybrid	PST Power Shifting	HMCVT Hydraulic Mechanical Continuously Variable Transmission
Energy Conversion Efficiency	78-90%	78-84%	85-90%	70—79%
Electric Control Difficulty	High	Medium	Low	Low
Hybrid Scheme	Series-Parallel	Series	—	—
Hybrid Energy Saving	Yes - Series-Parallel	There is a series	None	None
Start acceleration assistance	Available	Available	None	None
Crawling gear	Low-speed pure electric drive	Segment gearbox + motor low speed	Multi-stage reducer mechanism	Hydraulic motor
CVT reverse	Motor reverse	Motor reverse	Reverse mechanism	Motor reverse
Shift comfort	Excellent	Excellent	Medium	Excellent
Ease of Gear Shifting	Easy	Easy	Complex	Easy
Transmission Complexity	Simple	Simple	Complex	Complex
Cost	Low	Medium	Medium to High	High

First generation mass-produced product



Second Generation Reserve Products





# 2026 Product Launch Plan

FAVO

March



## S2604

- Targeting the Central Plains Region
- Medium to High-Power PTO Operations
- Power Split Hybrid, Fuel Saving 25%
- Shangchai 7H+ Engine 310Ps
- Maximum Traction  $\geq 70\text{kN}$
- Maximum Lifting Force  $\geq 65\text{kN}$

May



## F3004

- Targeting Xinjiang and Heilongjiang
- High-Power Plowing Operations
- Power Split Hybrid, Fuel Saving 25%
- Shangchai 9DF Engine 340Ps
- Traction  $\geq 80\text{kN}$
- Maximum Lifting Force  $\geq 70\text{kN}$

July



## F4004

- Targeting the Russian and Central Asian Overseas Markets
- Shore-Based Multibody Plow Traction Operations
- Power Split Hybrid, Fuel Saving 25%
- Yuchai K11 Engine 450Ps
- Traction  $\geq 110\text{kN}$
- Maximum Lifting Force  $\geq 98\text{kN}$

September



## K5004

- Targeting overseas markets in Russia and Central Asia
- Shore-based multi-furrow plowing operations
- Power split hybrid, saving 25% fuel
- Shanghai Diesel E13 engine 560Ps
- Traction force  $\geq 130\text{kN}$
- Maximum lifting force  $\geq 100\text{kN}$



Product model	S2604
Engine model	Shanghai Diesel 7H+
Hybrid system	Power split
Dimensions (Length × Width × Height, mm)	5840×2635×3200mm
Front Wheel Track (mm)	2050
Rear Wheel Track (mm)	2050
Maximum Traction (kN)	75
Maximum lifting capacity (kN)	65
PTO Output	Rear, Independent Drive
Rated Engine Speed (r/min)	540/1000
Suspension device type	Class III
Tire Model	Front 540/65R30 Rear 650/65R42



Product model	F3004
Engine model	Shangchai 9DF
Hybrid system	Power split
Dimensions (Length × Width × Height, mm)	6210×2870×3420mm
Front Wheel Track (mm)	2160
Rear Wheel Track (mm)	2240
Maximum Traction (kN)	90
Maximum lifting capacity (kN)	60
PTO Output	Rear, Independent Drive
Rated Engine Speed (r/min)	540/1000
Suspension device type	Class III/Class IV
Tire Model	Front 600/70R30 Rear 650/85R38



# F4004

FAVO



Product model	F4004
Engine model	Yuchai K11
Hybrid system	Power split
Dimensions (Length × Width × Height, mm)	6900×2950×3450mm
Front Wheel Track (mm)	2188
Rear Wheel Track (mm)	2240
Maximum Traction (kN)	106
Maximum lifting capacity (kN)	85
PTO Output	Rear, Independent Drive
Rated Engine Speed (r/min)	540/1000
Suspension device type	Category IV
Tire Model	Front 600/70R30 Rear 710/70R42



Product model	K5004
Engine model	Shanghai E13
Hybrid system	Power split
Dimensions (Length × Width × Height, mm)	8100/4900/3700
Maximum Traction (kN)	130
Maximum lifting capacity (kN)	100
PTO Output	Rear, Independent Drive
Rated Engine Speed (r/min)	540/1000
Suspension device type	Category IV
Tire Model	Front/Rear 520/85R42 Dual Tires

# Lean Manufacturing: Strict Management Standards in the Automotive Industry + Advanced Manufacturing Experience from Partners



Laser cutting machine



Welding robot



Large CNC Machine Tool



Machining center



Production site

## Automotive-grade supply system

- Automotive-grade electrical system (protection level IP67), wiring harness and connectors comply with IATF16949 certification  
Full vehicle automotive-grade sealing  
Products such as motors and electronic controls utilize components from new energy vehicles  
The wiring harness utilizes top-tier domestic suppliers in the new energy automotive industry

## Strict quality standards

- Operates strictly according to the ISO9001 quality system, selecting both international and domestic high-end supply chain systems, ensuring high-quality development for the enterprise  
Utilizes an excellent supply chain system from the new energy passenger car sector, with R&D and quality capabilities far surpassing those in the agricultural machinery industry

## Advanced MES production system

- Employs a layered architecture, connecting the enterprise planning layer (ERP) with the workshop equipment layer  
Through a closed-loop management approach of "connect - monitor - optimize," it bridges the gap between planning and execution to achieve lean and intelligent production processes

# Industrial Integration: Introducing Vehicle-Grade Excellent Partners, Collaborating Across the Entire Ecosystem

FAVO

## Electric Drive

**EcoTorc**  
Power Split Generation

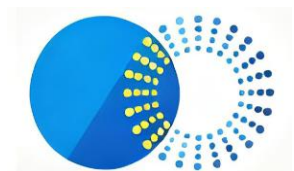
**physis**  
Series Solution

**AMTRANS**

Integrated Bridge Box Series Solution

**PHASE**  
MOTION CONTROL

Second-Generation Power Distribution



Series and Parallel Solutions

## Battery



Power Type Battery

**microvast**  
MATERIALS  
Improvement of Cell Quality



High Capacity Pack

## Electric Control Intelligent Driving



Electric Control System

**MEGMEET**  
Dual Electric Control System



Intelligent Driving System

## Electronic and Electrical Connection System



Reliable Wiring Harness Solutions

**Recodeal**  
High-Quality Connectors and High-Pressure Wiring Harness

## Ecological Cooperation



**SHANMON**

Largest Excavator Loader Company in China  
Excellent Low-Cost Manufacturing Capability



Traditional Tractor Manufacturing Company



The academician team from Yangzhou University begins planting cooperation.



半仙做农机

粉丝: 16.4万

抖音号: cheng900511

Vertical Field KOL

➤ Building a sales system in an orderly manner according to the product rhythm



On November 16, 2025, through the original all-frame power diversion drive system, we will complete the certification testing of the first batch of new energy products in China.

2025.Q4



Cooperating with Tiantuo to connect with 300 channels, strengthening the foundation of offline sales.

2026.Q2



Using the advantages of joint venture company channels and the factory location in Xinjiang, covering overseas markets in Russia, South America, Europe, and Central Asia.

2026.Q4



Collaborate with internet celebrity "Bianxian Zuo Nongji" and other vertical field KOLs to deliver 20 units in small batches, simultaneously addressing sales and service issues, rapidly enhancing brand influence in new media.

2026.Q1



Establishing a self-built factory in Xinjiang to serve the local and surrounding markets, achieving a localized production and sales closed loop.

2026.Q3



# FAVO (Beijing) Technology Co., Ltd.

December 2025

